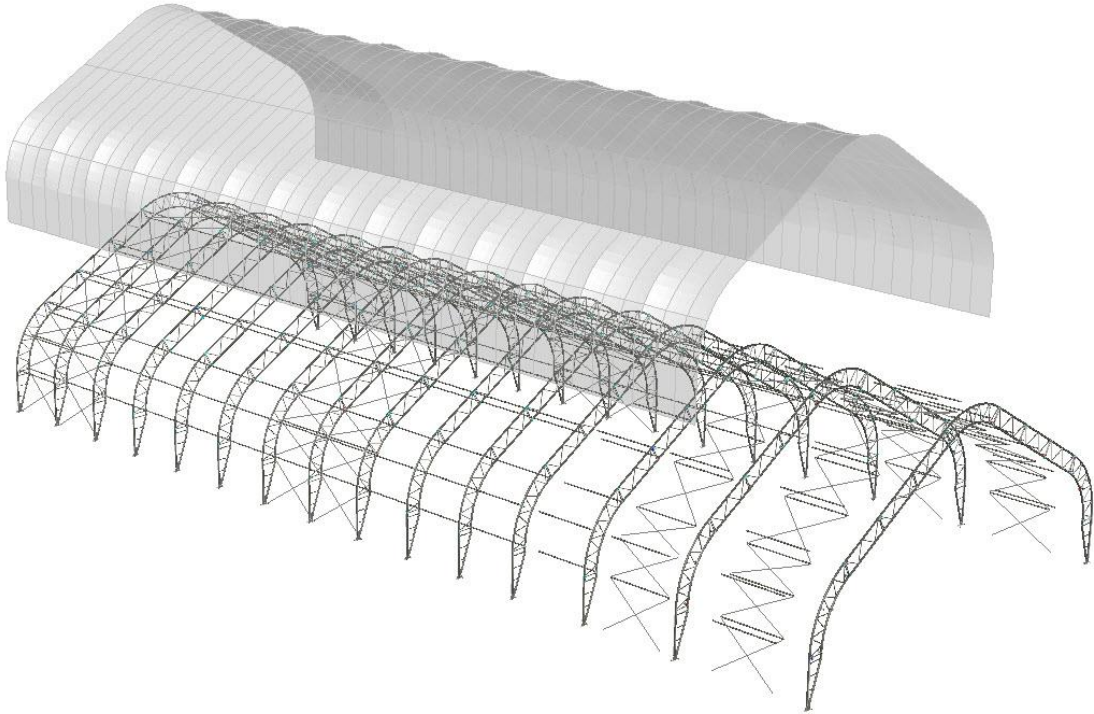




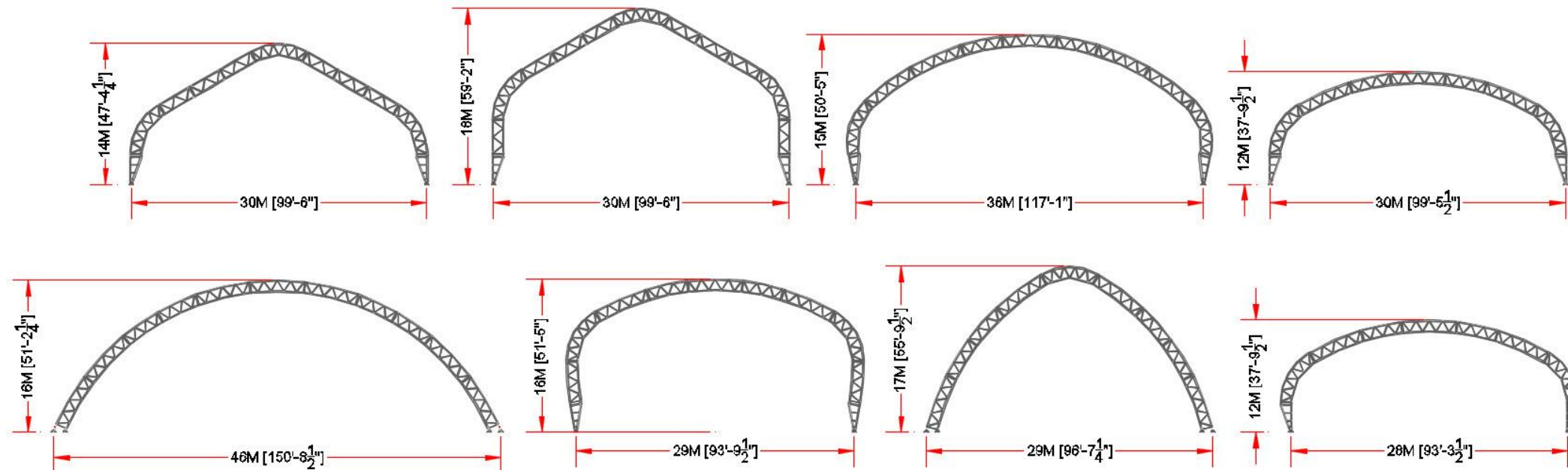
Tentnology Tentanium®



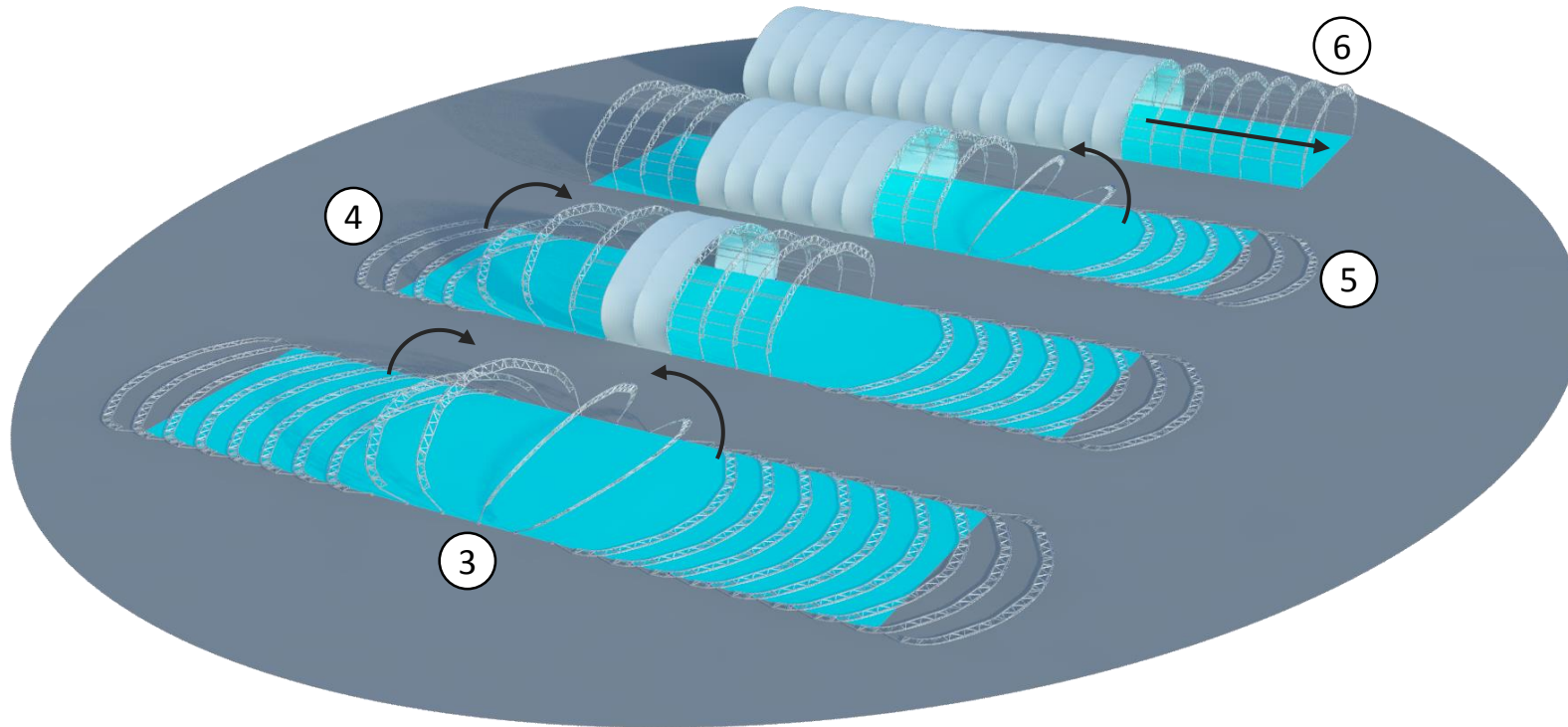
- ✓ Snow Rated\*
- ✓ Basic Wind Speed 115mph\*
- ✓ Quality assurance: ISO\_9001:2000
- ✓ Full traceability of structural analysis
- ✓ 15 years fabric, 50 year frame warranty\*
- ✓ Infinitely expandable
- ✓ Reconfigure to wider or more narrow span
- ✓ Easy to relocate and transport

\*System is configurable to function & to site-specific wind & snow load requirements.

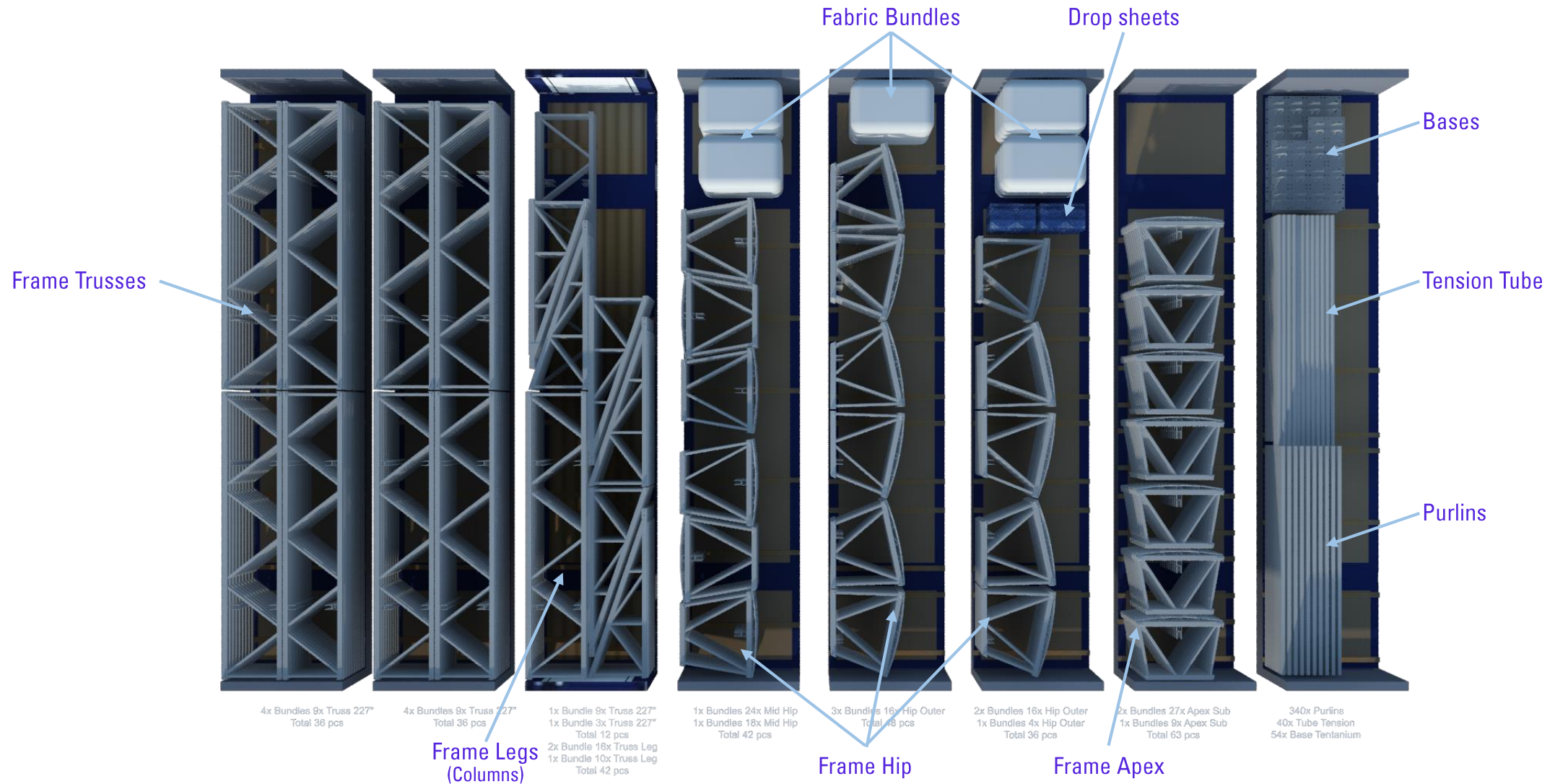
## TENTANIUM® ALTERNATE TRUSS CONFIGURATIONS with modular components



**NOTE: Tentanium® System is configurable to function & to site-specific wind & snow load requirements.**

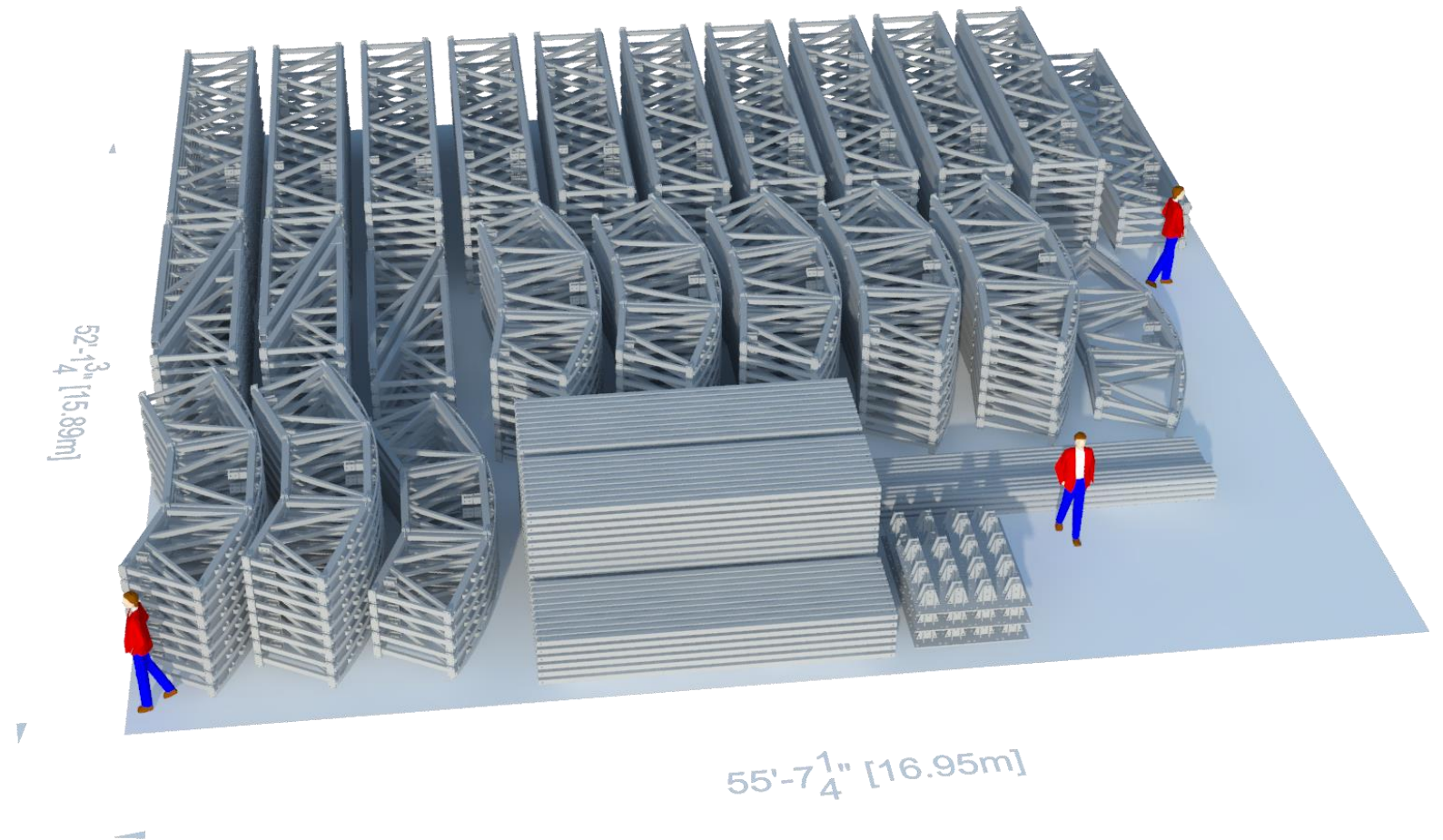


1. Survey the area and anchor the bases
2. Assemble the frames on ground
3. Frame Erection on section 1 (Purlins, Cable bays, and Roof)
4. Frame Erection on section 2 (Purlins, Cable bays, and Roof)
5. Frame Erection on final Section (Purlins, Cable bays, and Roof)
6. Complete Roof installation.
7. Install gable ends and Accessories (Doors, Vents, and Lights)



- ❑ As an example you can store a complete Tentanium 1100 Series 30m x 100m on an approx. footprint of 15.89m x 16.95m
- ❑ You can save more room if you stack more trusses together on a higher pile.

The image doesn't show fabric bundles, bolts or purlin sleeves but all can store on the same area.



### Typical Equipment

- ❑ 2x 8,000 to 10,000 lbs Reach Forklifts
- ❑ 2x Articulating Boom Lift 50' to 60'
- ❑ 1x 50 Ton Crane

### Considerations:

- Level and unencumbered site above and below ground
- Safe and secure storage for tools & equipment
- Clear truck access to site
- Other equipment for anchor kit\*\*\*



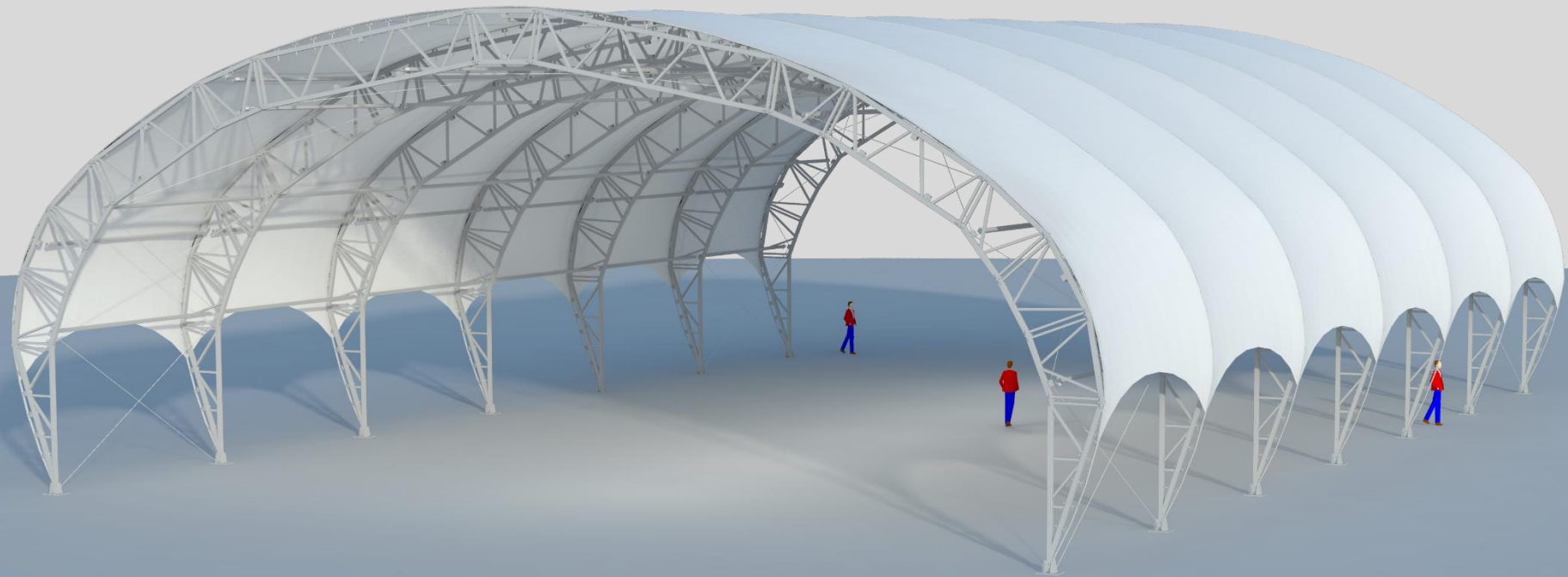
1x



2x



2x



Examples



