

Video
Installation

[www.youtube.com/
tentnologytents/playlists](http://www.youtube.com/tentnologytents/playlists)

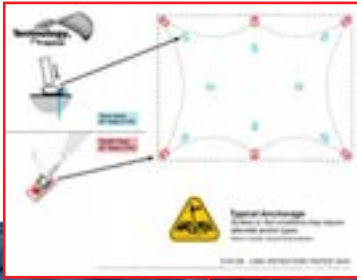


**Page 1. Trapeze
Installation**

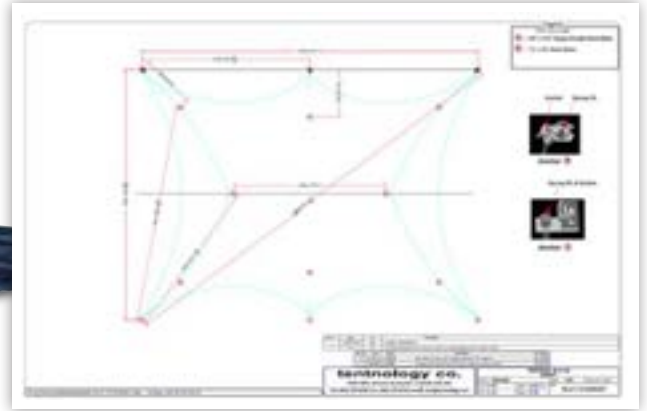
**Page 4. Trapeze Wall
Installation**

**Page 6. Trapeze Joiner
Installation**

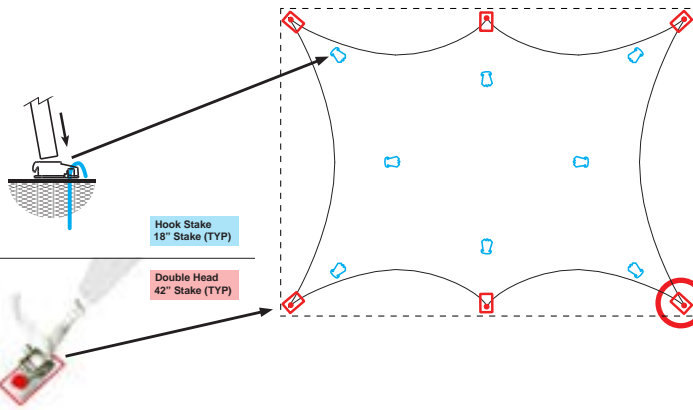
- 1.1** With Survey Tarp
Lay out flat and mark the locations for legs and load binders



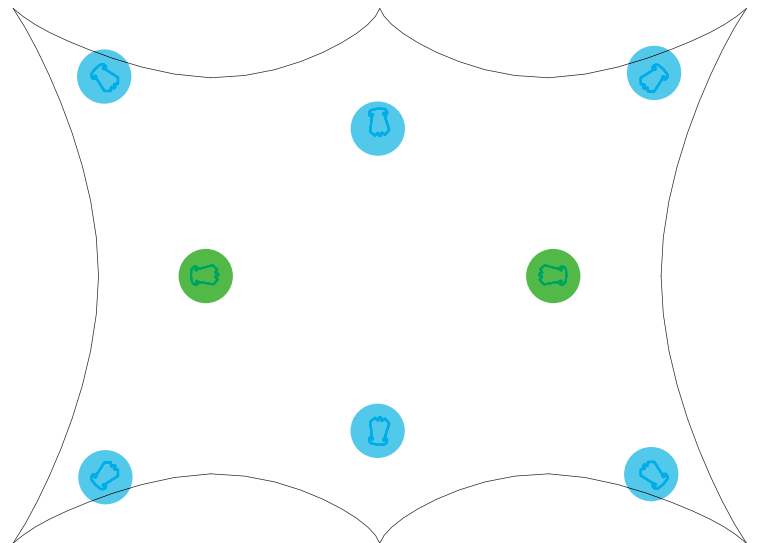
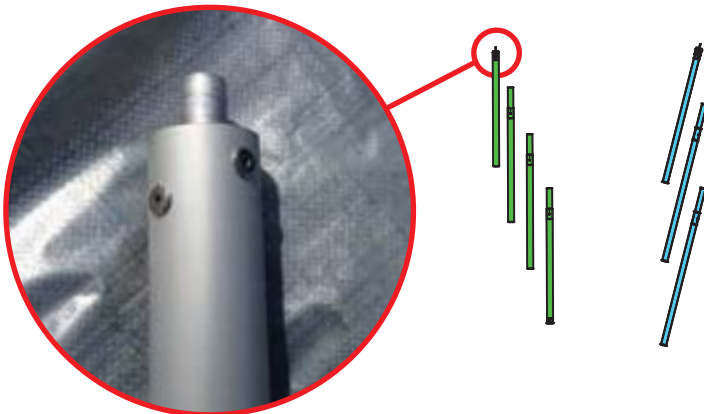
- 1.2** Without Survey Tarp
Use the Survey sheet provided to determine the location of legs and load binders



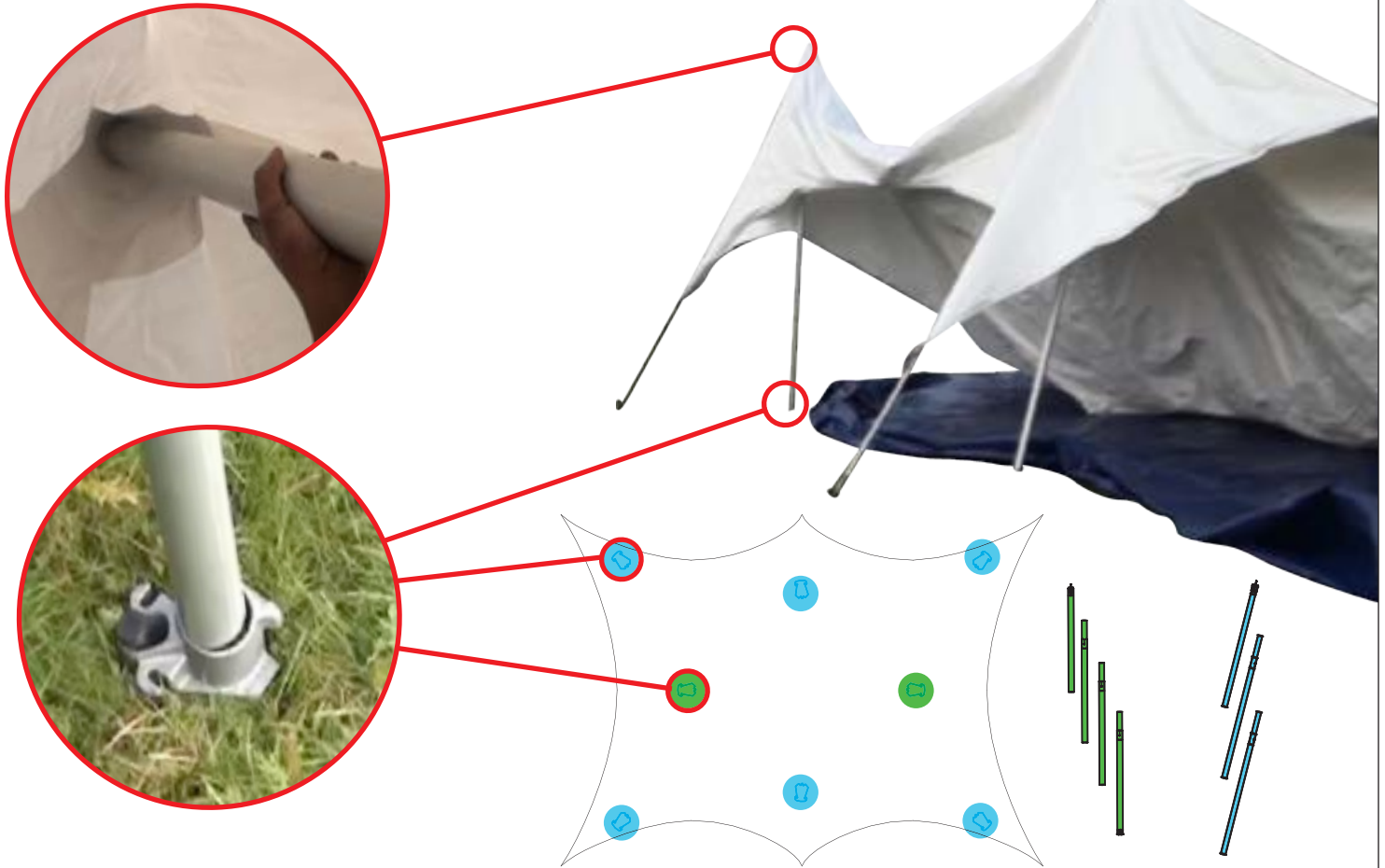
- 2** Open top onto dropsheet.
Choke webbing onto corner and attach to load binder.



- 3** Connect pole segments together for the **Main Mast** and **Side Pole**



4 Install complete pole into the corner of top and footplate.



5 Push pole towards foot and pull webbing upward

6 Tighten further with socket wrench until fully tensioned.



Video
Installation

[www.youtube.com/
tentnologytents/playlists](http://www.youtube.com/tentnologytents/playlists)



1 Insert keder rail into Trapeze Top
This step may be done before the tent is erect.



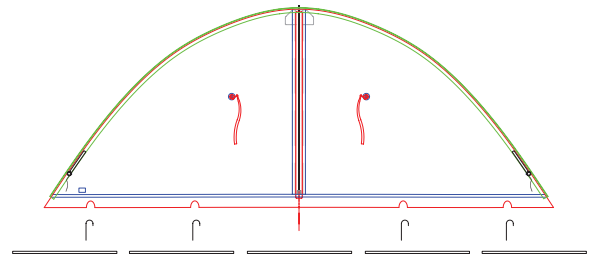
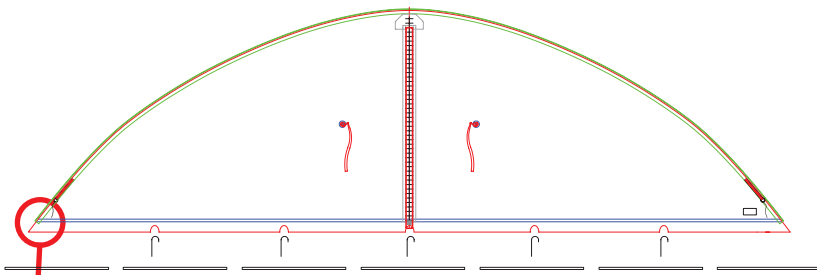
2 Insert Wall into Keder Rail

3 Pull wall through Trapeze
1 person feeds, 1 Person pulls

4 Insert pipe into wall pocket



Part #	DESCRIPTION	PAGE
70.63.134	INSTALLATION MANUAL TRAPEZE	5 of 8



5 Tighten wall by attaching rope to Trapeze

6 Insert tube into pocket and secure with J-Hook



Trapeze Joiner Installation

Part #	DESCRIPTION	PAGE
70.63.134	INSTALLATION MANUAL TRAPEZE	6 of 8

Video
Installation

[www.youtube.com/
tentnologytents/playlists](http://www.youtube.com/tentnologytents/playlists)



1

Insert keder rail into
Trapeze Top and Joiner

**DEBURR
SHARP
EDGES**

2

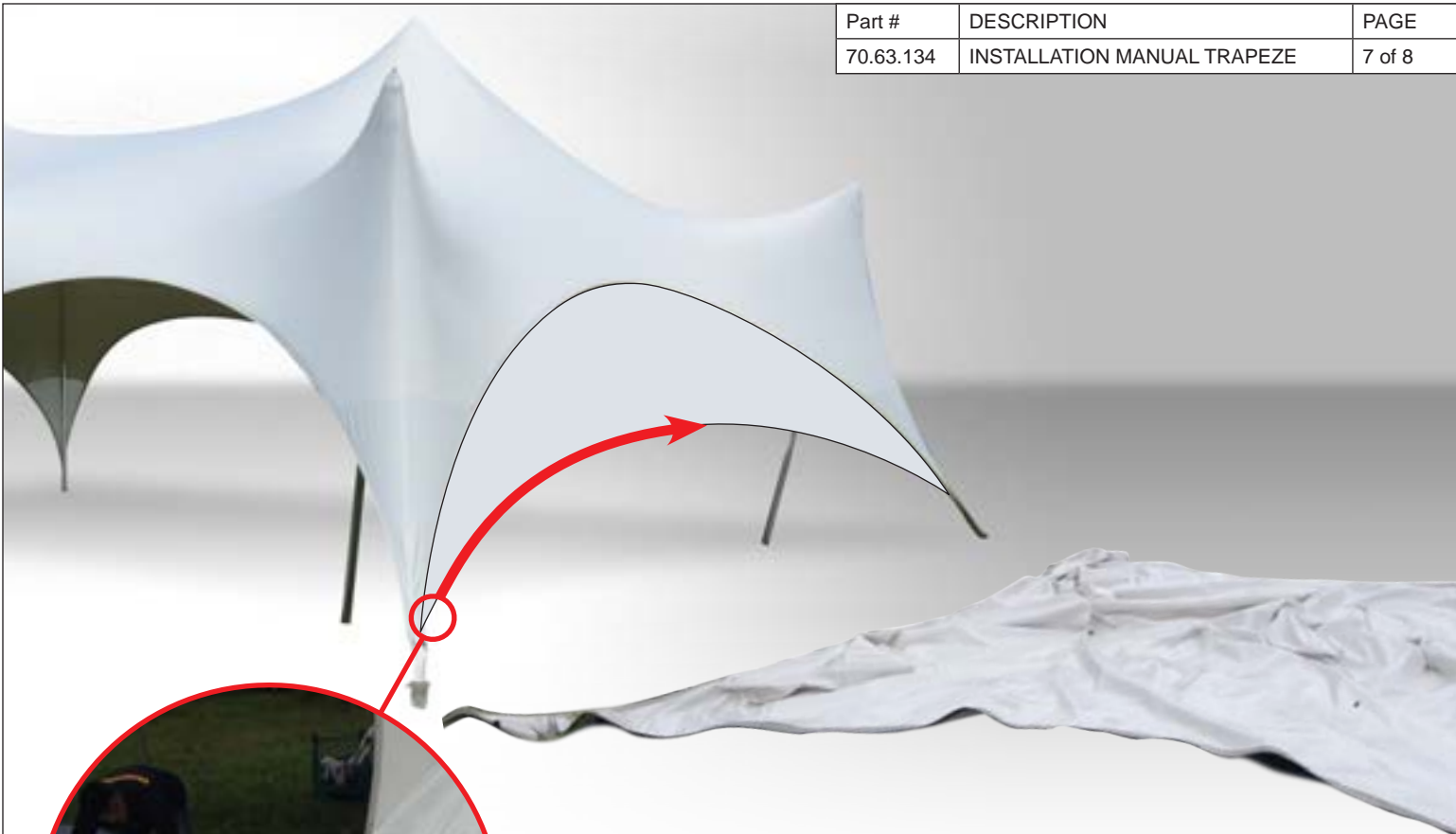
Pull Joiner through keder into Trapeze Top.



1 person feeds
1 person pulls



Part #	DESCRIPTION	PAGE
70.63.134	INSTALLATION MANUAL TRAPEZE	7 of 8



3 Pull 2nd tent through Keder Rail on joiner



4.1 Choke webbing onto **Load Binder**



4.2 Attach hook to **Joiner Ring** and tighten Ratchet



5 Tighten each side evenly and ensure that seam is at Center

